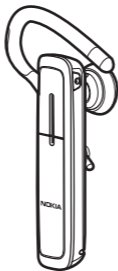


# Nokia Bluetooth Headset BH-602 User Guide

---



Issue 1 EN

## DECLARATION OF CONFORMITY

Hereby, NOKIA CORPORATION declares that this HS-91W product is in compliance with the essential requirements and other relevant provisions of Directive 1999/5/EC. A copy of the Declaration of Conformity can be found at [http://www.nokia.com/phones/declaration\\_of\\_conformity/](http://www.nokia.com/phones/declaration_of_conformity/).

# CE 0434

© 2007 Nokia. All rights reserved.

Reproduction, transfer, distribution or storage of part or all of the contents in this document in any form without the prior written permission of Nokia is prohibited.

Nokia and Nokia Connecting People are registered trademarks of Nokia Corporation. Other product and company names mentioned herein may be trademarks or tradenames of their respective owners.

Bluetooth is a registered trademark of Bluetooth SIG, Inc.

Nokia operates a policy of ongoing development. Nokia reserves the right to make changes and improvements to any of the products described in this document without prior notice.

Under no circumstances shall Nokia be responsible for any loss of data or income or any special, incidental, consequential or indirect damages howsoever caused.

The contents of this document are provided "as is". Except as required by applicable law, no warranties of any kind, either express or implied, including, but not limited to, the implied warranties of merchantability and fitness for a particular purpose, are made in relation to the accuracy, reliability or contents of this document. Nokia reserves the right to revise this document or withdraw it at any time without prior notice.

The availability of particular products may vary by region. Please check with the Nokia dealer nearest to you.

Unauthorized changes or modifications to this device may void the user's authority to operate the equipment.

#### Export Controls

This device may contain commodities, technology or software subject to export laws and regulations from the US and other countries. Diversion contrary to law is prohibited.

Issue 1 EN

# Contents

---

<b>1. Introduction .....</b>	<b>5</b>
Bluetooth wireless technology.....	5
<b>2. Get started.....</b>	<b>7</b>
Overview .....	7
Chargers.....	8
Charge the battery.....	8
Switch the headset on or off.....	10
Pair the headset.....	10
Disconnect the headset.....	12
Reconnect the headset.....	12
Troubleshooting.....	12
<b>3. Basic use .....</b>	<b>14</b>
Place the headset on the ear.....	14
Call handling .....	15
Adjust the headset volume.....	17
Mute or unmute the microphone.....	17
Switch the call between headset and mobile device .....	17
Turn off indicator light.....	18
Clear settings or reset.....	18
<b>4. Battery information .....</b>	<b>19</b>
<b>Care and maintenance .....</b>	<b>21</b>

# 1. Introduction

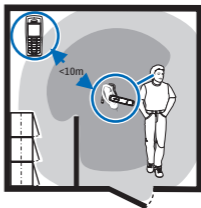
---

With the Nokia Bluetooth Headset BH-602 you can make and receive calls while on the move and use your mobile device hands free. You can use the headset with compatible devices that support Bluetooth wireless technology.

Read this user guide carefully before using the headset. Also read the user guide for your mobile device, which provides important safety and maintenance information. Keep the headset and its accessories out of reach of small children.

## ■ Bluetooth wireless technology

Bluetooth wireless technology allows you to connect compatible devices without cables. A Bluetooth connection does not require that the mobile device and the headset be in line of sight, but the maximum distance between the devices is 10 meters (33 feet).



## I n t r o d u c t i o n

The closer the mobile device and the headset are to each other, the better is the performance. The optimal operating range is shown in dark grey in the picture. The connection is subject to interference from distance and obstructions (shown in light grey) or other electronic devices.

The headset is compliant with the Bluetooth Specification 2.0 + EDR supporting the following profiles: Headset Profile 1.1 and Hands-Free Profile 1.5. Check with the manufacturers of other devices to determine their compatibility with this device.

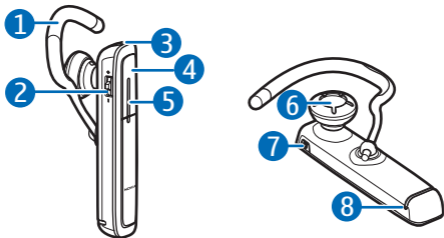
There may be restrictions on using Bluetooth technology in some locations. Check with your local authorities or service provider.

## 2. Get started

---

### ■ Overview

The headset contains the following parts: earloop (1), volume key (2), charger connector (3), answer/end key (4), indicator light (5), earpiece (6), power key (7), and microphone (8).



Before you can start using the headset, you must charge the battery and pair the headset with a compatible device.

## Get started

Parts of the headset are magnetic. Metallic materials may be attracted to the headset. Do not place credit cards or other magnetic storage media near the headset, because information stored on them may be erased.

### ■ Chargers

Check the model number of any charger before using it with this headset. The headset is intended for use with the AC-3, AC-4, and DC-4 chargers.



**Warning:** Use only chargers approved by Nokia for use with this particular enhancement. The use of any other types may invalidate any approval or warranty, and may be dangerous.

When you disconnect the power cord of any enhancement, grasp and pull the plug, not the cord.

### ■ Charge the battery

The headset has an internal, nonremovable, rechargeable battery. Do not attempt to remove the battery from the headset, as you may damage the headset.



1. Connect the charger to a wall outlet.
2. Connect the charger cable to the charger connector. The indicator light is red while charging. It may take a while before charging starts. If charging does not start, disconnect the charger, plug it in again, and retry.

Charging the battery for 15 minutes provides about 5 hours of talk time with the AC-4 charger. Charging the battery fully may take up to 45 minutes with the AC-4 charger.

3. When the battery is fully charged, the indicator light turns green. Disconnect the charger from the headset and the wall outlet.

The fully charged battery has power for up to 11 hours of talk time or up to 300 hours of standby time. However, the talk and standby times may vary with different compatible Bluetooth devices, usage settings, usage styles, and environments.

To check the battery charge when the headset is not connected to a charger, briefly press the power key. When the indicator light is green (displayed for about 3 seconds), the charge level is sufficient. When the light is yellow, you

## Get started

may need to recharge the battery soon. When the light is red, recharge the battery.

When battery power is low, the headset beeps at regular intervals, and the indicator light slowly flashes red.

### ■ Switch the headset on or off

To switch on, press and hold the power key until the headset beeps and the green indicator light is displayed. When the headset tries to connect to a paired device, the indicator light slowly flashes green. When the headset is connected to a paired device and is ready for use, the indicator light slowly flashes blue. If the headset has not been previously paired with a device, it automatically enters the pairing mode (see “[Pair the headset](#),” p. 10).

To switch off, press and hold the power key until the headset beeps and the red indicator light flashes once.

### ■ Pair the headset

1. Ensure that your mobile device is switched on.

2. To pair the headset if it has not been previously paired with a device, switch on the headset. The headset enters the pairing mode, and the indicator light flashes blue quickly.

To pair the headset if it has been previously paired with another device, ensure that the headset is switched off, and press and hold the power key until the indicator light starts to flash blue quickly.

3. Activate the Bluetooth feature on the mobile device, and set it to search for Bluetooth devices. See the user guide of your device for instructions.
4. Select the headset from the list of found devices.
5. Enter the passcode **0000** to pair and connect the headset to your device. In some mobile devices, you may need to make the connection separately after pairing. See the user guide of your device for details. You only need to pair the headset with your device once.

If pairing is successful, the headset appears in the menu of the mobile device where you can view the currently paired Bluetooth devices.

## Get started

### Disconnect the headset

To disconnect the headset from your mobile device, switch off the headset, or disconnect it in the Bluetooth menu of your device.

You do not need to delete pairing with the headset to disconnect it.

### Reconnect the headset

To connect the headset to your mobile device, switch on the headset, and make the connection in the Bluetooth menu of your device, or press and hold the answer/end key for about 2 to 3 seconds until you hear a short beep.

In your device, you may be able to allow the headset to connect to it automatically when the headset is switched on. To do this in Nokia devices, change your paired device settings in the Bluetooth menu.

## ■ Troubleshooting

If you cannot connect the headset to your mobile device, do as follows:

## Get started

- Ensure that the headset is charged, switched on, and paired with your device.
- Ensure that the Bluetooth feature is activated on your device.
- Ensure that the headset is within 10 meters (33 feet) of your device and that there are no obstructions between the headset and the device, such as walls, or other electronic devices.

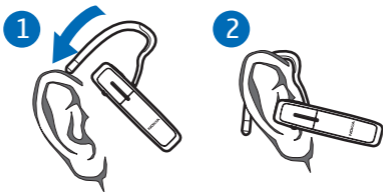
### 3. Basic use

---

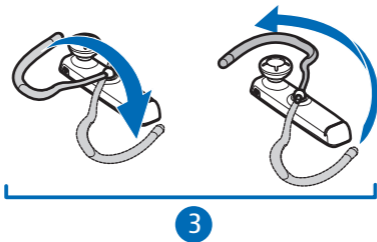
#### ■ Place the headset on the ear

The headset is provided with an earloop that you can use for a better fit on your ear.

Slide the earloop over your ear (1), and gently plug the earpiece into your ear. Push or pull the earloop to set its length. Set the headset so that it points toward your mouth (2).



To use the headset on the left ear, rotate the earloop so that the loop is to the left of the Nokia logo (3).



## ■ Call handling

To make a call, use your mobile device in the normal way when the headset is connected to it.

If your device supports last number redialing with the headset, press the answer/end key twice.

If your device supports voice dialing with the headset, press and hold the answer/end key until the mobile device starts

## Basic use

voice dialing, and proceed as described in the user guide of the device. Voice dialing cannot be used during a call.

To answer a call, press the answer/end key, or use the keys of the mobile device. When you receive a call, the indicator light flashes blue quickly, and you hear a ringing tone through the headset.

To reject an incoming call, press the answer/end key twice, or use the keys of the mobile device.

To end a call, press the answer/end key, or use the keys of the mobile device.

To answer a waiting call and put the current call on hold, press and hold the answer/end key. To answer a waiting call and end the current call, press the answer/end key briefly. To reject a waiting call, press the answer/end key twice. To switch between the active call and the call on hold, press and hold the answer/end key. To end the active call and make the call on hold active, press the answer/end key. To use these features, your mobile device must support the Bluetooth Hands-Free profile 1.5, and call waiting must be set to on in your device. Call waiting is a network service.



## ■ Adjust the headset volume

The headset automatically adjusts the volume according to ambient noise. To set the minimum volume, press the volume key up to increase or down to decrease the volume, or use the keys of the mobile device. To adjust the volume quickly, press and hold the volume key in the desired direction.

## ■ Mute or unmute the microphone

To mute or unmute the microphone during a call, press the middle of the volume key.

## ■ Switch the call between headset and mobile device

To switch the call from the headset to the connected mobile device, press and hold the power key for about 2 to 3 seconds (the headset switches off), or use the respective function in your device. To switch the call back to the headset, switch on the headset, or press and hold the answer/end key (when the headset is on).

### ■ Turn off indicator light

To turn the indicator light off or on, briefly press the power key and the answer/end key at the same time when no call is in progress.

When the indicator light is off, it is not shown when the headset is connected to a device, when you handle calls, or when the microphone is muted. When you switch on the headset, the indicator light is enabled.

### ■ Clear settings or reset

To clear all the pairing settings from the headset, press and hold the power key and the answer/end key until the headset beeps and the indicator light alternates red and green.

To reset the headset if it stops functioning, although it is charged, plug the charger into the headset, and briefly press the power key and the answer/end key at the same time. The headset switches off. To use the headset, reconnect it to your mobile device. The reset does not clear the headset settings.

## 4. Battery information

---

Your device is powered by a rechargeable battery. The battery can be charged and discharged hundreds of times, but it will eventually wear out. Recharge your battery only with Nokia approved chargers designated for this device.

Unplug the charger from the electrical plug and the device when not in use. Do not leave a fully charged battery connected to a charger, since overcharging may shorten its lifetime. If left unused, a fully charged battery will lose its charge over time.

Never use any charger that is damaged.

Leaving the device in hot or cold places, such as in a closed car in summer or winter conditions, will reduce the capacity and lifetime of the battery. Always try to keep the battery between 15°C and 25°C (59°F and 77°F). A device with a hot or cold battery may not work temporarily, even when the battery is fully charged. Battery performance is particularly limited in temperatures well below freezing.

## B a t t e r y   i n f o r m a t i o n

Do not dispose of batteries in a fire as they may explode.  
Batteries may also explode if damaged.

## Care and maintenance

---

Your device is a product of superior design and craftsmanship and should be treated with care. The following suggestions will help you protect your warranty coverage.

- Keep the device dry. Precipitation, humidity, and all types of liquids or moisture can contain minerals that will corrode electronic circuits. If your device does get wet, allow it to dry completely.
- Do not use or store the device in dusty, dirty areas. Its moving parts and electronic components can be damaged.
- Do not store the device in hot areas. High temperatures can shorten the life of electronic devices, damage batteries, and warp or melt certain plastics.
- Do not store the device in cold areas. When the device returns to its normal temperature, moisture can form inside the device and damage electronic circuit boards.
- Do not attempt to open the device.

## C a r e   a n d   m a i n t e n a n c e

- Do not drop, knock, or shake the device. Rough handling can break internal circuit boards and fine mechanics.
- Do not use harsh chemicals, cleaning solvents, or strong detergents to clean the device.
- Do not paint the device. Paint can clog the moving parts and prevent proper operation.

All of the above suggestions apply equally to your device, battery, charger, or any enhancement. If any device is not working properly, take it to the nearest authorized service facility for service.